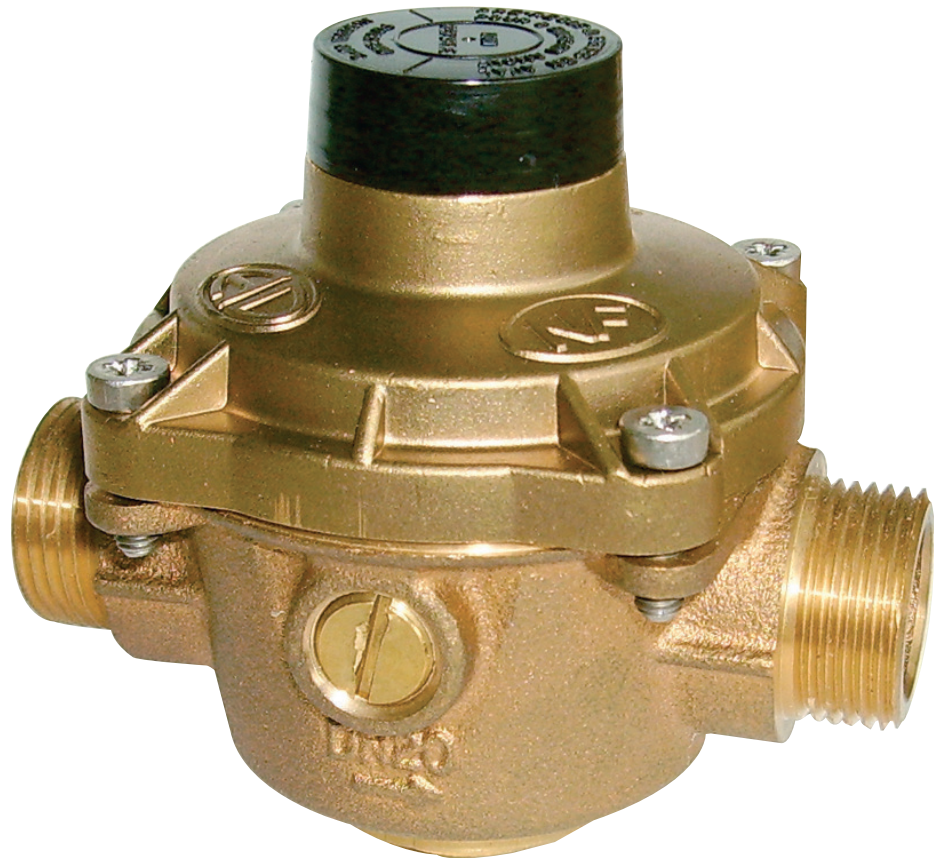


9

Pressure reducing valves type REDUNEUF

Desbordes

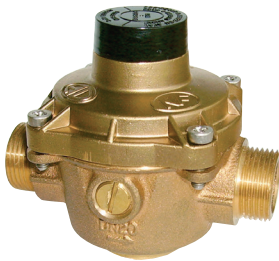
Technical Data Sheet



Description

The Desbordes pressure reducing valves 9 bodies are made of bronze. Due to their design, they are not affected by scale or dirt and do not need any maintenance. They can be fitted on compressed air, neutral gases and fuel oil at ambient temperature circuits. For these cases of applications consult us.

- Control and maintain the downstream pressure at an adjustable reduced value, whether there is a flow or not
- Keep an outlet pressure at a constant value, even by variation of the upstream pressure (the downstream pressure cannot vary more than 10% of the variation of the upstream pressure, according to the Standard)
- Guarantee a high flow rate at a constant outlet pressure because of low head loss
- Pre-set at 3 bar
- With 1/4" plugs on both sides to allow pressure gauge connection



9

Desbordes pressure reducing valves type REDUNEUF

DN		PFA in bar	PS in bar				Cat.	Ref.	Weight Kg
"	mm		L1	L2	G1	G2			
1/2	15	25	25	25	x	25	4.3	149B7219	0,55
3/4	20	25	25	25	x	25	4.3	149B7220	0,78
1	25	25	25	25	x	25	4.3	149B7221	1,45

Important notice :

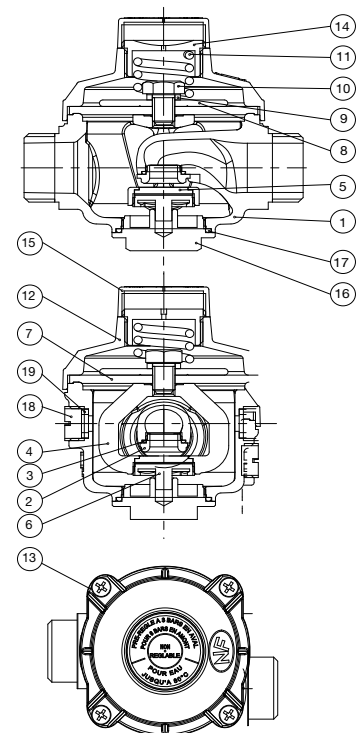
L1, L2, G1 and G2 correspond to liquids/gas classified into degree of danger according to the Pressure Equipment Directive (PED). The article 4.3 applies to equipments with no CE marking.

Technical features

Operating temperature	Mini. : -10 °C / Maxi. in permanent service : 80 °C
Permissible operating pressure (PFA) in water	See table above
Maximum permissible pressure (PS) other mediums	See table above
Connection	Male/male, BSP thread
Gauge connection	1/4"
Mediums	Water, other mediums : consult us

Nomenclature and materials

N°	Designation	Materials	EURO	ANSI
1	Body	Bronze	CuSn5Zn5Pb2-C	ASTM B 505
2	Seat	Stainless steel (DN 15 and 20)	X8CrNiS18-09	AISI 303
3	O-ring	NBR (Nitrile)		
4	Stirrup	Brass	CuZn40Pb2	
5	Seal	NBR (Nitrile)		
6	Flange	Brass	CuZn39Pb3	ASTM B 124
7	Membrane	EPDM		
8	Membrane washer	Brass	CuZn39Pb3	ASTM B 124
9	Copper washer	Annealed copper		
10	Membrane screw	Stainless steel	X5CrNi 18-10	AISI 304
11	Spring	Anticorrosive steel	SH	
12	Cap	Brass	CuZn39Pb2	ASTM B 124
13	Screw	Stainless steel	X5CrNi 18-10	AISI 304
14	Nut for spring pressing	Brass	CuZn39Pb3	ASTM B 124
15	Plastic cover	Polyethylen		
16	Plug cover	Brass	CuZn39Pb3	ASTM B 124
17	O-ring	NBR (Nitrile)		
18	Pressure gauge plug	Brass	CuZn39Pb3	ASTM B 124
19	Pressure gauge seal	NBR (Nitrile)		



Approvals

ACS 

International construction Standards :
 Pressure reducing valves EN 1567
 Thread connection NF EN ISO 228

Application

Supply of housing developments, collective housing.

Installation

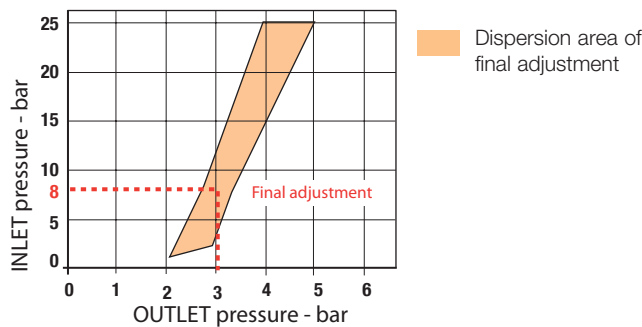
In domestic water supply, the DESBORDES reducing valves are fitted just after the water meter and thus protect the whole installation.

If there is a frost risk, they should be drained.

They can be fitted in any position (horizontal, upside down, fluid ascending or reversed and inclined) but the direction of flow indicated by the engraved arrow on the valve body, must be respected.

Operation

9 - Final adjustment of pressure

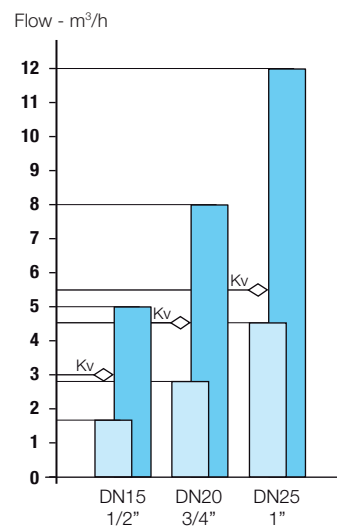


Acoustic level :

DS value Lap in dB(A). The higher the DS is, the quieter the machine/apparatus will be : Our pressure reducing valves are very silent.

DN	Lap values
1/2	10 dB(A) up to 0,18 l/s
3/4	16 dB(A) up to 0,32 l/s
1	20 dB(A) up to 0,57 l/s

Flow



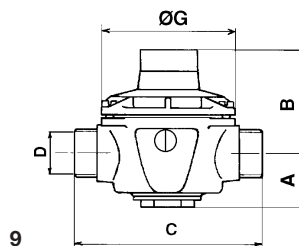
Flow at the velocity used in the Standard (2 m/s)

Maximum flow, at 0 outlet pressure, for upstream pressure of 8 bar

Kv : Flow in m³/h when the output pressure becomes 1 bar lower than its zero flow setting

Sizing

DN	D		A	B	C	G
mm	"	mm	mm	mm	mm	mm
15	1/2	15/21	31	53	85	59
20	3/4	20/27	31	59	100	73
25	1	26/34	43	66	122	94



The descriptions and photographs contained in this product specification sheet are supplied by way of information only and are not binding.

Socla reserves the right to carry out any technical and design improvements to its products without prior notice. Warranty : All sales and contracts for sale are expressly conditioned on the buyer's assent to Socla terms and conditions found on its website at www.socla.com. Socla hereby objects to any term, different from or additional to Socla terms, contained in any buyer communication in any form, unless agreed to in a writing signed by an officer of Socla.



A WATTS Brand

Socla sas

365 rue du Lieutenant Putier • 71530 Virey-Le-Grand • France

Tel. +33 03 85 97 42 00 • Fax +33 03 85 97 42 42

contact@wattswater.com • www.socla.com

ISO 9001 version 2015 / ISO 18001