

Technical data sheet

Type 453

EA anti-pollution non-return valve

System 03

Applications and special features



- Approval according to EN 13959.
- Operates in any position.
- Excellent sealing at high as well as low pressure (NF).
- Inspection cover to check and replace internal parts without dismantling the device .
- Interchangeable closing kit without specific tools.
- 2 drilled bosses with test cocks 1/2" (except DN 40/50 : 1/4")
- 1 boss with drain plug 1/2") (except DN 40/50 : 1/4")

Technical description

DN mm	PFA bar	PS - bar				Cat.	References	Vvs-nr
		L1	L2	G1	G2			
40/50	16	16	16	16	16	I	149B 3831	
60/65*	16	16	16	15	16	I	149B 3832	
80*	16	16	16	12	16	I	149B 3833	
100*	16	16	16	10	16	I	149B 3834	
150	16	13	16	0,5	16	I	149B 3836	
200	10	10	10	0,5	10	I	149B 3837	
250	10	10	10	0,5	10	I	149B 3838	

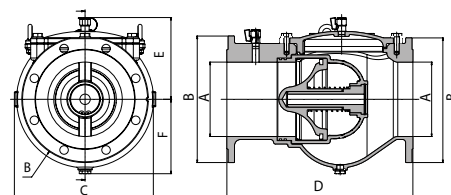
Important notice :

The indicated pressure for the different categories of fluids (L1/L2/G1/G2) is under no condition a guarantee of use. Therefore, it is essential to validate the use of products under given operating conditions.

- **Connection** : with flange - See table
- **Permissible operating pressure PFA - water-** (for supply, distribution and disposal of water) : See table
- **Maximum permissible pressure PS - other mediums** : See table
- **θ** : Mini - 10 °C
Maxi. 100 °C
- **Medium** : Clear liquids- Gas
- **Approvals** : ACS
- **Other approval available** : *WRAS : Consult us
- **International construction Standards** :
Flanges connection : EN 1092-1 & EN 1092-2
Overall dimensions according EN 558-1 series 48
CE Conformity Directive 97/23/CE
NF Anti-pollution according to NF EN 13959

Overall dimensions

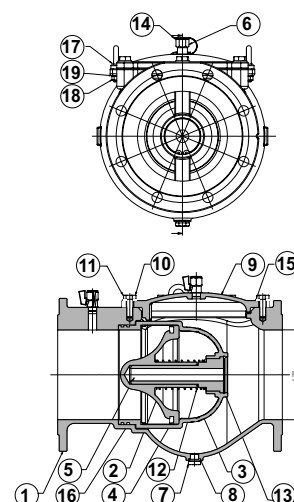
DN	A	B	C	D	E	F	Weight
mm	mm	mm	mm	mm	mm	mm	kg
40/50	65	-	200	113	80	8	
60/65	185	-	240	118	93	12	
80	200	-	260	131	98	15	
100	222	-	300	141	115	21	
150	285	-	400	197	144	42	
200	340	380	500	220	200	65	
250	400	438	600	256	235	94	



Technical data sheet Type 453 - EA anti-pollution non-return valve

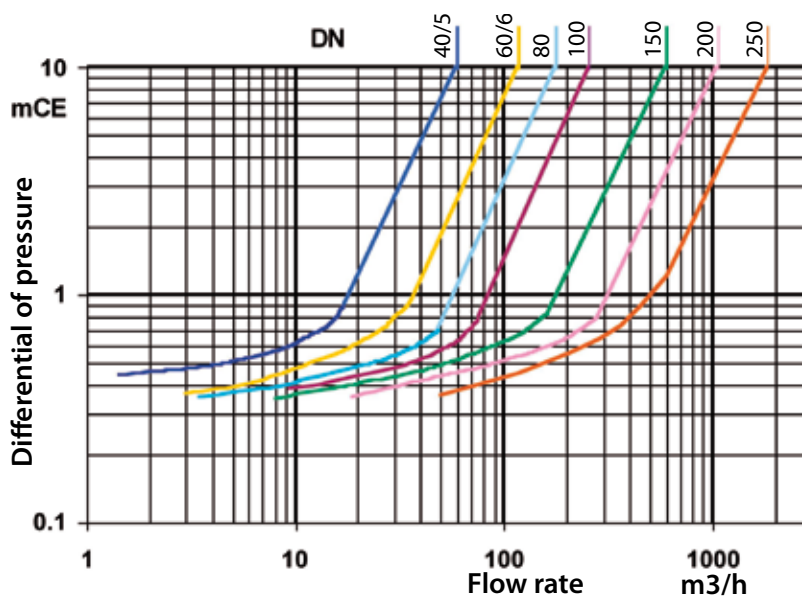
Spare parts list and materials

Nr	Description	Material	EURO	ANSI
1	CASING	Ductile iron + Epoxy	EN-GJS-400.15	ASTM A 536 65-45-12
2	CLOSING SYSTEM	DZR brass	CuZn36Pb2As	
3	SEAT	Stainless steel	X5CrNi 19-10	AISI 304
4	FLAT SEAL	EPDM		
5	STEM	DZR brass	CuZn36Pb2As	
6	VALVE	Brass	CuZn39Pb2	
7	PLUG	Brass	CuZn39Pb3	
8	O-RING	EPDM		
9	CAP	Ductile iron + Epoxy	EN-GJS-400.15	ASTM A 536 65-45-12
10	SCREW	Stainless steel	X5CrNi 19-10	AISI 304
11	WASHER	Stainless steel	X5CrNi 19-10	AISI 304
12	SPRING	Stainless steel	X10CrNi18-8	AISI 316
13	CIRCLIPS	Stainless steel	X5CrNi 18-10	AISI 302
14	COVER	PE		
15-16	O-RING	EPDM		
17	VALVE HOLDING	Zinc coated steel		
18	NUT	Stainless steel	X5CrNi 19-10	AISI 304
19	WASHER	Stainless steel	X5CrNi 19-10	AISI 304



Working principle

DN	Opening pressure in mm/WC	Kv	ζ
mm		m ³ /H	
40/50	200 up to 400mm/CE	58,5	2,92
60/65		116	2,12
80		174,5	2,15
100		253	2,51
150		587	2,35
200		1044	2,35
250		1819	1,89



Socla can accept no responsibility for possible errors in catalogue, brochures and other printed material. Socla reserve the right to alter its products without notice. This also applies to products already agreed. All trademarks in this material are the property of the respective companies. All right reserved.

Socla SAS

365 rue du lieutenant Putier
71530 VIREY LE GRAND
Postal address : BP 10273
71107 CHALON SUR SAONE Cedex

Tel : 33 3 85 97 42 52
Fax : 33 3 85 97 97 42
<http://www.socla.com>
e-mail: commer@socla.com