

Technical data sheet

Type 11 EP

Pressure reducing valve

Desbordes®

Applications and special features



- Control and maintain the downstream pressure at an adjustable reduced value, whether there is a flow or not.
- Keep an outlet pressure at a constant value, even by variation of the upstream pressure (the down-stream pressure cannot vary more than 10 % of the variation of the upstream pressure, according to the Standard).
- No maintenance required, not affected by scale or dirt.
- Can be installed in any position.
- Guarantee a high flow rate at a constant outlet pressure because of low head loss.
- Work as pressure reducing valve (standard terminology) as well as "regulator" and as "pressure regulating valve" (when applies for gas).
- Downstream setting : 1bar to 5,5 bar; indicative value according to EN1567
- Supplied pre-set at 3 bar
- 2 pressure gauge connections and drains at both sides of the casing.

Technical description

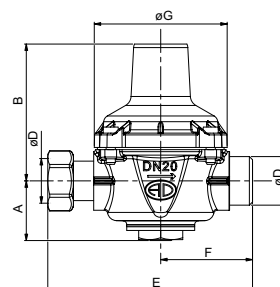
DN		PFA (bar)	PS (bar)				Cat.	References	Vvs-nr
"	mm		L1	L2	G1	G2			
3/4	20	25	25	25	X	25	3.3	149B7511	

L1, L2, G1 and G2 correspond to liquids/gas classified into degree of danger according to the Pressure Equipment Directive (PED). The article 3.3 applies to equipments with no CE marking.

- **Connection** : union-nut 3/4/male 3/4
- **Permissible operating pressure PFA - water** : See table
- **Downstream pressure gauge** : 1/4"
- **Maximum permissible pressure PS - other mediums** : See table
- **θ** : Mini. -10 °C
Maxi. 80 °C (40°C domestic fuel oil)
- **Mediums** : water, air - neutral gas, domestic fuel oil
- **Approvals** : ACS
- **International construction Standards** :
Pressure reducing valves EN 1567
Thread connection NF EN ISO 228

Overall dimensions

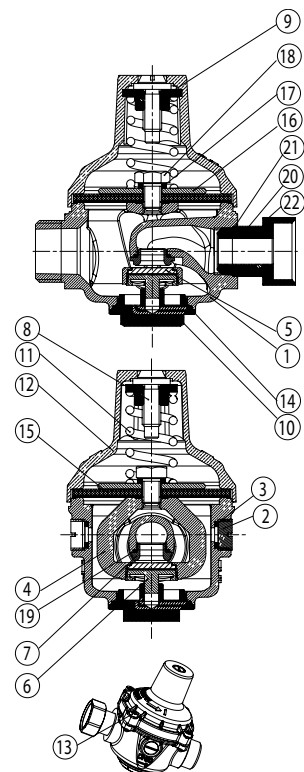
DN	D		A	B	D	E	F	G	Weight
	"	mm	mm	mm	mm	mm	mm	mm	kg
20	3/4	20/27	31	75	3/4	112	50	73	0,88



Technical data sheet Type 11 EP - Pressure reducing valve

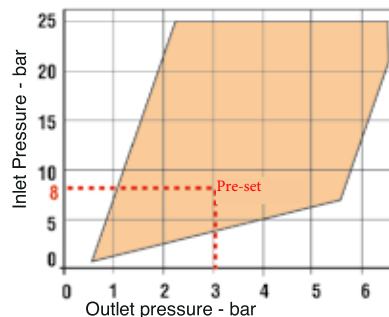
Spare parts list and materials

Nb	Description	Material	EURO	ANSI
1	CASING	bronze	CuSn5Zn5PB5-C	ASTM B 505
2	PRESSURE GAUGE CAP	DZR brass	CuZn39Pb3	ASTM B 124
3	SEAL	NBR (Nitrile)		
4	STIRRUP	Brass	CuZn40Pb2	ASTM B 124
5	SEAL	NBR (Nitrile)		
6	PLATE	Brass	CuZn39Pb3	ASTM B 124
7	SEAT	Stainless steel	X8CrNiS18-09	AISI 303
8	ADJUSTING SCREW	Brass	CuZn39Pb3	ASTM B 124
9	NUT	Brass	CuZn39Pb3	ASTM B 124
10	CAP COVER	Brass	CuZn39Pb3	ASTM B 124
11	SPRING	Anticorrosive steel	VD C.rSi	
12	CAP	Brass	CuZn40Pb2	ASTM B 124
13	SCREW	Stainless steel	X5CrNi 18-10	AISI 304
14	O-RING	NBR (Nitrile)		
15	MEMBRANE	NBR/Polyamide		
16	MEMBRANE WASHER	Brass	CuZn39Pb3	ASTM B 124
17	WASHER	Copper		
18	MEMBRANE SCREW	Stainless steel	X5CrNi 18-10	AISI 304
19	O-RING	NBR (Nitrile)		
20	NIPPLE	Brass	CuZn39Pb3	ASTM B 124
21	O-RING	NBR (Nitrile)		
22	NUT	Brass	CuZn39Pb3	ASTM B 124



Working principle

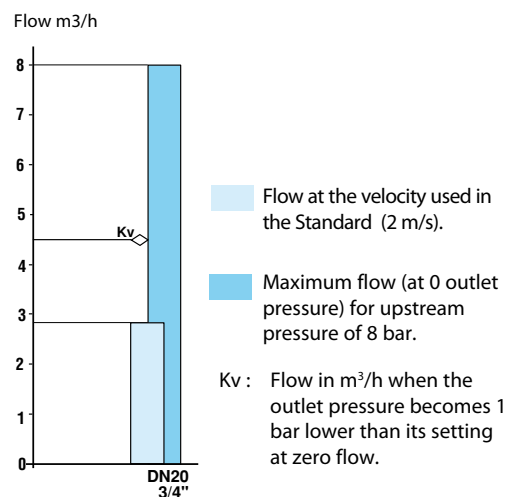
• Pressure setting range



• Acoustic level. The standardised DS expresses the differential between the standard (noise generator) and its value measured in dB(A). The higher the DS is, the quieter the machine/apparatus will be.

	Standardised DS value as per NF-S-31016
3/4"	16 dB(A) at 0,32 l/s

• Flow



Socla can accept no responsibility for possible errors in catalogue, brochures and other printed material. Socla reserve the right to alter its products without notice. This also applies to products already agreed. All trademarks in this material are the property of the respective companies. All right reserved.

Socla SAS

365 rue du lieutenant Putier
71530 VIREY LE GRAND
Postal address : BP 10273
71107 CHALON SUR SAONE Cedex

Tel : 33 3 85 97 42 52
Fax : 33 3 85 97 97 42
<http://www.socla.com>
e-mail: commerfr@socla.com