

Technical data sheet

Type 11BIS RCBP

Pressure reducing valve

Desbordes®

Applications and special features



- Control and maintain the downstream pressure at an adjustable reduced value, whether there is a flow or not.
- Designed to set downstream pressures of about 0,1 to 1 bar maximum.
- Examples of applications : agriculture, irrigation, laboratory.
- No maintenance required, not affected by scale or dirt.
- Can be installed in any position.
- Work as pressure reducing valve (standard terminology) as well as "regulator" and as "pressure regulating valve" (when applies for gas).
- Downstream setting : 0,1 bar to 0,6 bar
- Pressure gauge connection 1/4" and drain at each side of the casing.

Technical description

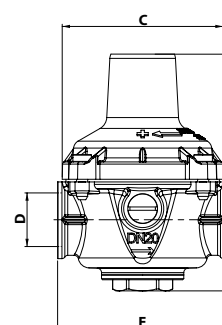
DN		PFA (bar)	PS (bar)				Cat.	References	Vvs-nr
"	mm		L1	L2	G1	G2			
3/4	20	10	10	10	X	10	3.3	149B7065	

L1, L2, G1 and G2 correspond to liquids/gas classified into degree of danger according to the Pressure Equipment Directive (PED). The article 3.3 applies to equipments with no CE marking.

- **Connection** : female/female, BSP thread
- **Downstream pressure gauge connection** : 1/4"
- **Permissible operating pressure PFA - water** : See table
- **Maximum permissible pressure PS - other mediums** : See table
- **θ** : Mini. -10 °C
in permanent service 80 °C
- **Mediums** : water, air and neutral gas
- **Approvals** : ACS
- **International construction Standards** : Thread connection NF EN ISO 228

Overall dimensions

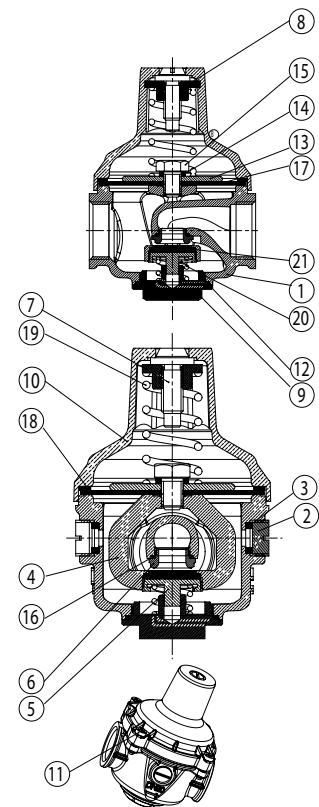
DN	D		A	B	C	G	Weight
	"	mm	mm	mm	mm	mm	
20	3/4	20/27	32	75	77	73	0,92



Technical data sheet Type 11BIS RCBP - Pressure reducing valve

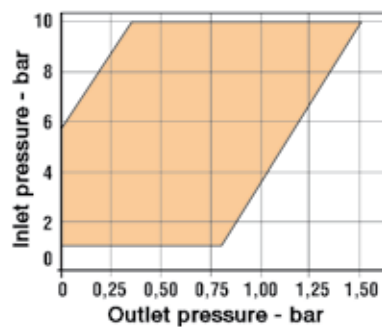
Spare parts list and materials

Nb	Description	Material	EURO	ANSI
1	CASING	bronze	CuSn5Zn5Pb5-C	ASTM B 505
2	CAP	DZR brass	CuZn39Pb3	ASTM B 124
3	SEAL	NBR (Nitrile)		
4	STIRRUP	Brass	CuZn39Pb2	ASTM B 124
5	PLATE	Brass	CuZn39Pb3	ASTM B 124
6	SEAT	Stainless steel	X8CrNiS18-09	AISI 303
7	ADJUSTING SCREW	Brass	CuZn39Pb3	ASTM B 124
8	NUT	Brass	CuZn39Pb3	ASTM B 124
9	CASING CAP	Brass	CuZn39Pb3	ASTM B 124
10	CAP	Brass	CuZn40Pb2	ASTM B 124
11	SCREW	Stainless steel	X5CrNi 18-10	AISI 304
12	O-RING	NBR (Nitrile)		
13	MEMBRANE WASHER	Brass	CuZn39Pb3	ASTM B 124
14	WASHER	Copper		
15	MEMBRANE SCREW	Stainless steel	X5CrNi 18-10	AISI 304
16	O-RING	NBR (Nitrile)		
17	MEMBRANE	NBR/Polyamide		
18	SEAL	Red fibre		
19	SPRING	Stainless steel	X10CrNi 18-8	AISI 302
20	SPRING	Stainless steel	X10CrNi 18-8	AISI 302
21	SEAL	NBR (Nitrile)		



Working principle

• Pressure setting range



Flow

Maximum flow rates at upstream pressure of 4 bar according to the setting of downstream pressure.

Downstream pressure (bar)	Flow l/h
0,100	600
0,200	1 300
0,300	1 900
0,400	2 500
0,500	3 000
0,600	3 700

Socla can accept no responsibility for possible errors in catalogue, brochures and other printed material. Socla reserve the right to alter its products without notice. This also applies to products already agreed. All trademarks in this material are the property of the respective companies. All right reserved.

Socla SAS

365 rue du lieutenant Putier
71530 VIREY LE GRAND
Postal address : BP 10273
71107 CHALON SUR SAONE Cedex

Tel : 33 3 85 97 42 52
Fax : 33 3 85 97 42
<http://www.socla.com>
e-mail: commerfr@socla.com